

Beira Litoral O'Meeting 2026

February 5-10, 2026



BLOM26

BEIRA LITORAL O' MEETING 2026

Figueira da Foz - Portugal

6-8
FEB / FEV



WORLD RANKING EVENT
WRE
CANDIDATE

06/02
- MASS START

07/02
- MIDDLE / MÉDIA
- SPRINT

08/02
- MIDDLE / MÉDIA
- PRE-O SPRINT



Beira Litoral O'Meeting 2026

February 5-10, 2026



Contents

Event Presentation.....	3
Organization.....	3
Contacts.....	3
Schedule.....	4
Rules and Regulations.....	5
Model Event.....	5
Sprint Mass Start.....	6
Technical Information.....	7
Middle Distance.....	8
Technical Information.....	10
Sprint WRE.....	11
Arena.....	11
Technical Information.....	12
Middle Distance WRE.....	1
Technical Information.....	3
Venues.....	4
Stage 2 e 4 Forest/Quiaios.....	4
Localizations.....	4
Event Center.....	4
Hard floor and Showers.....	5
Secretary and Parking.....	5
Parking and Motorhome Overnight Parking.....	5
Hard Floor and Showers.....	5
Babysitting.....	6
SI-Card Number Changes and Modifications.....	7
Classifications.....	7
Prizes.....	7
Start times.....	7
Sports Insurance.....	8
Bar.....	8
Technical Jury Constitution.....	10

Event Presentation

The Beira Litoral O'Meeting (BLOM) 2026 establishes itself as one of the main international orienteering events at the beginning of the season, bringing together high-level competition, technical diversity, and excellent natural settings. The event takes place between February 5-10, 2026, in Figueira da Foz and Montemor-o-Velho, in the Centro region of Portugal.

Beira Litoral O'Meeting 2026

February 5-10, 2026



With a program integrating four days of training and three days of competition, BLOM 2026 proposes five distinct stages, designed to test the versatility and technical ability of athletes in different contexts.

The competitive calendar includes a Night Sprint with mass start, held in an urban environment, where quick map reading and concentration play a determining role. This is followed by an Urban Sprint in Montemor-o-Velho, a competition counting toward the World Ranking Event (WRE), held in a historic center marked by high technical complexity.

The program also includes two Middle Distance stages in dune forest, one of which is also integrated into the WRE circuit, providing demanding technical challenges in terrain of high landscape value. The competition closes with a Precision Orientation (PreO) stage, in the sprint variant, open to all participants and with particular relevance in the Paralympic context.

Parallel to the sporting aspect, BLOM 2026 also positions itself as a showcase of the Centro region, inviting athletes and companions to experience the local culture, traditional gastronomy, and natural heritage of Figueira da Foz and Montemor-o-Velho.

Organization

The organization of BLOM 2026 is in charge of the Mondego Sports Association (Associação Desportiva do Mondego), with the support of around 50 volunteers, responsible for the logistical and technical operation and the functioning of the event throughout the competition.

The Portuguese Orienteering Federation (Federação Portuguesa de Orientação) is a partner of the event and it has the support of the Municipality of Figueira da Foz, the Parish Council of Quaios and São Julião, and the City Council of Montemor-o-Velho.

President – Susana Reis Mora - 914252591

Technical Director - Rui Mora – 917270453

BLOM26 Supervisor – Carlos Monteiro

PreO Supervisor - Nuno Rebelo

Contacts

Associação Desportiva do Mondego, Orimondego

Email: adm.orimondego@gmail.com

Site: www.admondego.pt

Facebook: <https://www.facebook.com/orimondego/>

Schedule

February 5 - Thursday

- 09h00 - Secretary opening at Centro de Artes e Espetáculos
- 11h00 - Secretary closing at Centro de Artes e Espetáculos
- 14h00 - Secretary opening at Centro de Artes e Espetáculos
- 15h00 - Secretary closing at Centro de Artes e Espetáculos

Beira Litoral O'Meeting 2026

February 5-10, 2026



- 10h00 to 16h00 - Model Event

06 Fev - Sexta

- 09h00 - Secretary opening at Centro de Artes e Espetáculos
- 11h00 - Secretary closing at Centro de Artes e Espetáculos
- 14h00 - Secretary opening at Centro de Artes e Espetáculos
- 10h00 to 16h00 - Model Event
- 18h30 - Babysitting opening
- 19H30 – Mass Start Urban Starts - Figueira da Foz
- 20h00 – Secretary closing
- 20h15 – Babysitting closing
- 20h30 - Prize ceremony (estimated)
- 20h30 - Hard floor opening

February 7 - Saturday

- 08h30 - Secretary opening - Costinha
- 09h00 - Hard floor closing
- 09h00 – Babysitting opening - Costinha
- 09h30 – Middle Distance start - Costinha
- 09h40 / 10h40 – Open Categories, T10 and D/H12 start
- 13h00 – Secretary closing - Costinha
- 14h30 - Secretary opening - Montemor-o-Velho
- 14h30 - Quarantine opening - Montemor-o-Velho
- 15h00 - Babysitting opening - Montemor-o-Velho
- 15h15 - Quarantine closing
- 15h30 - Sprint WRE start – Montemor-O-Velho
- 15h40 / 16h40 – Open categories, T10 e D/H12 start
- 15h00 - Hard floor opening
- 16h30 - Babysitting closing
- 16h30 - Secretary closing
- 17h00 - WRE Prize ceremony (estimated)

February 8 - Sunday

- 09h00 - Hard floor closing
- 09h00 - Secretary opening - Costinha
- 09h30 – Babysitting opening
- 10h00 - Middle Distance WRE start - Costinha
- 10h10 / 11h10 – Open Categories, T10 and D/H12 start
- 12h00 – Babysitting closing
- 12h00 – Secretary closing
- 12h30 - CWRE and BLOM2026 Prize ceremony (estimated)
- 13h00 - Hard floor opening
- 15h00 - Secretary opening PreO - Costinha
- 15h30 – PreO - Sprint start - Costinha
- 16h00 - Hard floor closing

February 9 - Monday

- 10h00 to 16h00 - Model Event

February 10 - Tuesday

- 10h00 a 16h00 - Model Event

Rules and Regulations

The WRE stages of BLOM 2026 will be specifically regulated by the IOF competition rules valid for WRE events.

Beira Litoral O'Meeting 2026

February 5-10, 2026



BLOM 2026, in general, will be regulated by the competition rules of the Portuguese Orienteering Federation (FPO) in effect for 2026.

In case of situations not foreseen by these regulations, IOF regulations will be applied.

M21E and W21E Starts

Given that stages 3 Sprint and 4 Middle are scoreable for the World Ranking Event of Sprint and Forest, respectively, in compliance with IOF regulations, the start lists for the elite categories in these 2 stages will be drawn up based on the world rankings of Sprint and Forest as of January 16, 2026 and in their inverse order of classification.

Model Event

February 5 - 10, 2026

Leirosa - Quiaios – Buarcos

Model Event Forest

- Leirosa
- Quiaios

Model event Urban

- Buarcos

Model event reservations must be made on the orioasis platform;

Maps will be distributed during accreditation at the Centro de artes e espetáculos (C.A.E) in Figueira da Foz on February 5 and 6, and at the event arena on the remaining days.

- Escalas: 1/7500; 1/10000; 1/15000



Sprint Mass Start

Stage 1

February 6, 2026

Figueira da Foz

Map: Figueira da Foz (updated in 2025)

Terreno: Urban area surrounding the Casino of Figueira. Area of more geometric streets, but allowing for the creation of good route options.

Cartographer: Alexandre Reis (Portugal)

Course setter: Pedro Rama

Map scale: 1:4.000

Contour interval: 2,5m

Parking: Area around Abadias Park and Centro de artes e espetáculos (C.A.E)

Additional information:

- In the Competition Relay category, mass start will be at 19:30.
- In the Open Relay category, mass start will be at 19:35.
- SPORTident Air+ will be active.
- The secretary during Sprint Mass Start will only serve matters related to this competition.



Beira Litoral O'Meeting 2026

February 5-10, 2026



Technical Information

Dia 0 - Etapa 1 - MassStar Média - Urbana Noturna						Nível Dificuldade	Winning Time	Contour Interval	Distance To Start
Escalão	Escala	Dist. Linear	Dist. M. Opção	Desnível	Pontos				
Formação / Branco	1:4000	1500 m	1600 m	20 m	15	2	10 - 15'	2,5 m	0 m
Iniciados M/W	1:4000	1800 m	1900 m	30 m	15	3	10 - 15'		
Juvenis M	1:4000	3300 m	4100 m	55 m	23	4	15 - 20'		
Juniores M	1:4000	4100 m	5200 m	90 m	24	5	15 - 20'		
Seniores M	1:4000	5800 m	7200 m	150 m	36	6	25 - 30'		
Vet I M	1:4000	4100 m	5000 m	80 m	27	6	25 - 30'		
Vet II M	1:4000	3200 m	4000 m	50 m	22	6	15 - 20'		
Vet III M	1:4000	2400 m	3100 m	45 m	21	6	15 - 20'		
Vet IV M	1:4000	2000 m	2500 m	40 m	13	6	10 - 15'		
Juvenis W	1:4000	2500 m	3000 m	45 m	21	4	15 - 20'		
Juniores W	1:4000	3600 m	4500 m	75 m	25	5	15 - 20'		
Seniores W	1:4000	4500 m	5500 m	80 m	24	6	25 - 30'		
Vet I W	1:4000	2700 m	3400 m	70 m	20	6	25 - 30'		
Vet II W	1:4000	2200 m	2600 m	45 m	15	6	15 - 20'		
Vet III W	1:4000	1400 m	2000 m	35 m	11	6	15 - 20'		
Vet IV W	1:4000	1300 m	1500 m	20 m	12	6	10 - 15'		
Verde	1:4000	2800 m	3600 m	70 m	23	3	15 - 20'		
Amarelo	1:4000	3600 m	4300 m	90 m	24	5	20 - 25'		
Vermelho	1:4000	5100 m	6300 m	95 m	32	6	20 - 25'		

Middle Distance

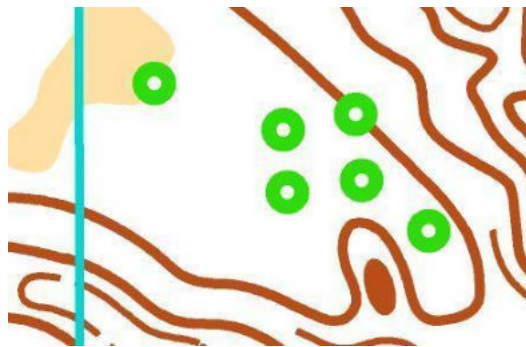
Stage 2

February 7, 2026

Quiaios North

Map: Quiaios Norte (updated in 2025)

Terrain: Typical Portuguese dune terrain, with forest covered in pine trees and some small open areas. There are several areas/points of dense vegetation, predominantly caused by the presence of mimosas (*Acacia dealbata*) and Samoucos (*Myrica Faya*) and some areas of low vegetation. Progression and visibility good/very good. There are areas in the terrain with bushes distinct from the rest of the vegetation (*Acacias* and *Samoucos*), represented perceptibly and in their correct location, using **symbol 418**.



When these bushes present together and with dimension, they are represented as patches using symbols **408** or **410**, depending on their density and possibility of crossing.



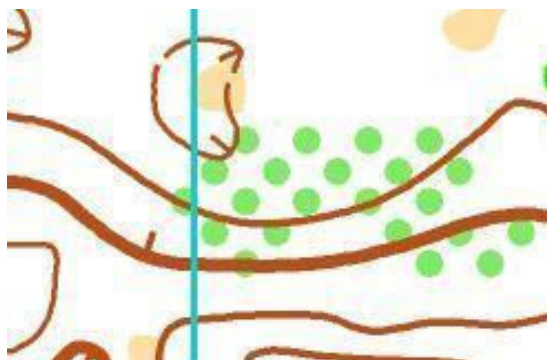
However, there are some areas where their proliferation is large, making their individual cartographic representation impossible. Following the criterion of using symbols 402.001

Beira Litoral O'Meeting 2026

February 5-10, 2026



and 404.001 (scattered bushes in open area), a similar symbol was created to represent areas of scattered bushes, but in a clean forest area (symbol 405).



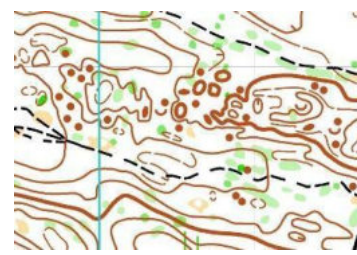
Cartographer: Alexandre Reis (Portugal)

Course setters: Rui Mora

Map scale: 1:10,000 and 1:7,500

Contour interval: 2.5m

Parking: In the locations indicated by the Organization



Beira Litoral O'Meeting 2026

February 5-10, 2026



Technical Information

Dia 1 - Etapa 2 Floresta - Média					Nível	Winning	Contour	Distance
Escalão	Escala	Dist. Média	Desnível	Pontos	Dificuldade	Time	Interval	To Start
T10	1:7500	2700 m	40 m	15 Controls	2	20 - 25'	2,5 m	100 m
M12	1:7500	3400 m	55 m	15 Controls	3			
W12	1:7500	3400 m	55 m	15 Controls	3			
M14	1:10 000	3900 m	70 m	14 Controls	4	25 - 30'		
W14	1:10 000	3400 m	55 m	12 Controls	4			
M16	1:10 000	4900 m	105 m	18 Controls	5	30 - 35'		
W16	1:10 000	4400 m	75 m	13 Controls	5			
M18	1:10 000	5800 m	105 m	14 Controls	6			
W18	1:10 000	4600 m	95 m	15 Controls	6			
M20	1:10 000	6100 m	120 m	19 Controls	6			
W20	1:10 000	5200 m	90 m	18 Controls	6			
MB	1:10 000	5000 m	100 m	16 Controls	4			
WB	1:10 000	4200 m	65 m	16 Controls	4			
M21A	1:10 000	5700 m	140 m	21 Controls	6			
W21A	1:10 000	4600 m	95 m	15 Controls	6			
M21E	1:10 000	6900 m	165 m	19 Controls	6			
W21E	1:10 000	5800 m	125 m	19 Controls	6			
M35	1:10 000	6100 m	120 m	19 Controls	6			
W35	1:10 000	4400 m	85 m	15 Controls	6			
M40	1:10 000	5900 m	135 m	20 Controls	6			
W40	1:10 000	4400 m	85 m	15 Controls	6			
M45	1:10 000	5900 m	130 m	20 Controls	6			
W45	1:10 000	4000 m	75 m	14 Controls	6			
M50	1:10 000	5900 m	115 m	19 Controls	6			
W50	1:10 000	4000 m	75 m	14 Controls	6			
M55	1:10 000	5200 m	90 m	18 Controls	6			
W55	1:10 000	3500 m	65 m	13 Controls	6			
M60	1:10 000	4800 m	90 m	17 Controls	6			
W60	1:10 000	3500 m	65 m	13 Controls	6			
M65	1:7500	4400 m	85 m	16 Controls	5	25 - 30'		
W65	1:7500	3300 m	65 m	12 Controls	5			
M70	1:7500	3400 m	70 m	11 Controls	5			
W70	1:7500	2900 m	60 m	12 Controls	5			
M75	1:7500	3300 m	65 m	12 Controls	5			
W75	1:7500	2900 m	60 m	12 Controls	5			
M80	1:7500	2900 m	60 m	12 Controls	5			
W80	1:7500	2600 m	50 m	10 Controls	5			
M85	1:7500	2600 m	50 m	10 Controls	5			
W85	1:7500	2600 m	50 m	10 Controls	5			
M90	1:7500	2600 m	50 m	10 Controls	5			
W90	1:7500	2600 m	50 m	10 Controls	5			
Branco - Easy Short	1:7500	2700 m	40 m	15 Controls	2	25 - 30'		
Verde - Easy Long	1:10 000	3500 m	45 m	16 Controls	3	40 - 45'		
Amarelo - Difficult Short	1:10 000	3700 m	50 m	15 Controls	5	20 - 25'		
Vermelho - Difficult Long	1:10 000	5500 m	100 m	17 Controls	6	40 - 45'		

Sprint WRE

Stage 3

February 7, 2026

Montemor -O-Velho

Map: Montemor-o-Velho (updated in 2026)

Terrain: Mixed urban area, considerable elevation change, with irregular historic area layout, narrow streets, alleys, stairways and confined passages, contrasting with modern area of geometric layout, wide streets and regular blocks. Good density of buildings, walls and paved spaces, requiring quick route choice decisions.

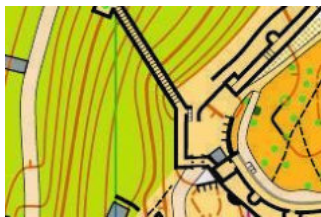
Cartographer: Alexandre Reis (Portugal)

Course setter: Luís Gaspar

Map scale: 1:4.000

Contour interval: 2,5m

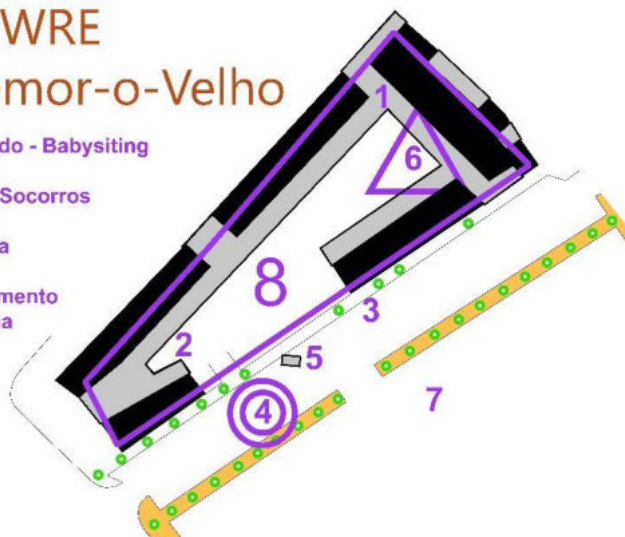
Additional Information: Stage with quarantine for all categories.



Arena

Arena WRE Montemor-o-Velho

- 1 - Secretariado - Babysiting
- 2 - Wc's
- 3 - Primeiros Socorros
- 4 - Chegadas
- 5 - Informática
- 6 - Partidas
- 7 - Estacionamento
- 8 - Quarentena



Beira Litoral O'Meeting 2026

February 5-10, 2026



Technical Information

Dia 1 - Etapa 3 Urbano - Sprint WRE						Nível	Winning	Contour	Distance
Escalão	Escala	Dist. Linear	Dist. + Curta	Desnível	Pontos	Dificuldade	Time	Interval	To Start
T10	1:3000	1300 m	1400 m	30 m	22 Controls	2	12 - 15'	2,5 m	0 m
M12	1:3000	1800 m	2100 m	50 m	25 Controls	3			
W12	1:3000	1800 m	2100 m	50 m	25 Controls	3			
M14	1:4000	1600 m	2100 m	85 m	17 Controls	4			
W14	1:4000	1500 m	2200 m	80 m	16 Controls	4			
M16	1:4000	1800 m	2700 m	90 m	19 Controls	5			
W16	1:4000	1800 m	2500 m	85 m	17 Controls	5			
M18	1:4000	2100 m	3000 m	110 m	18 Controls	6			
W18	1:4000	1900 m	2500 m	90 m	20 Controls	6			
M20	1:4000	2300 m	3100 m	120 m	19 Controls	6			
W20	1:4000	1800 m	2500 m	105 m	17 Controls	6			
MB	1:4000	1600 m	2200 m	75 m	21 Controls	4			
WB	1:4000	1300 m	2000 m	70 m	13 Controls	4			
M21A	1:4000	2100 m	2900 m	110 m	19 Controls	6			
W21A	1:4000	1900 m	2500 m	90 m	20 Controls	6			
M21E	1:4000	2400 m	3600 m	145 m	23 Controls	6			
W21E	1:4000	2200 m	3200 m	125 m	22 Controls	6			
M35	1:4000	2300 m	3100 m	120 m	19 Controls	6			
W35	1:4000	1800 m	2300 m	90 m	19 Controls	6			
M40	1:4000	2100 m	2900 m	115 m	21 Controls	6			
W40	1:4000	1800 m	2300 m	90 m	21 Controls	6			
M45	1:4000	2100 m	2900 m	110 m	18 Controls	6			
W45	1:4000	1600 m	2200 m	80 m	16 Controls	6			
M50	1:4000	2000 m	2900 m	95 m	20 Controls	6			
W50	1:4000	1600 m	2200 m	80 m	16 Controls	6			
M55	1:4000	1800 m	2500 m	105 m	17 Controls	6			
W55	1:4000	1600 m	2200 m	70 m	16 Controls	6			
M60	1:4000	1700 m	2400 m	85 m	17 Controls	6			
W60	1:4000	1600 m	2200 m	70 m	16 Controls	6			
M65	1:3000	1700 m	2300 m	80 m	22 Controls	5			
W65	1:3000	1500 m	1900 m	65 m	15 Controls	5			
M70	1:3000	1700 m	2200 m	70 m	19 Controls	5			
W70	1:3000	1300 m	1800 m	65 m	15 Controls	5			
M75	1:3000	1500 m	1900 m	65 m	15 Controls	5			
W75	1:3000	1300 m	1800 m	65 m	15 Controls	5			
M80	1:3000	1300 m	1800 m	65 m	15 Controls	5			
W80	1:3000	1100 m	1500 m	55 m	14 Controls	5			
M85	1:3000	1100 m	1500 m	55 m	14 Controls	5			
W85	1:3000	1100 m	1500 m	55 m	14 Controls	5			
M90	1:3000	1100 m	1500 m	55 m	14 Controls	5			
W90	1:3000	1100 m	1500 m	55 m	14 Controls	5			
Branco - Easy Short	1:3000	1300 m	1400 m	30 m	22 Controls	2			
Verde - Easy Long	1:4000	1500 m	1900 m	55 m	16 Controls	3			
Amarelo - Difficult Short	1:4000	1600 m	2200 m	70 m	17 Controls	5			
Vermelho - Difficult Long	1:4000	1900 m	2600 m	85 m	17 Controls	6			

Middle Distance WRE

Stage 3

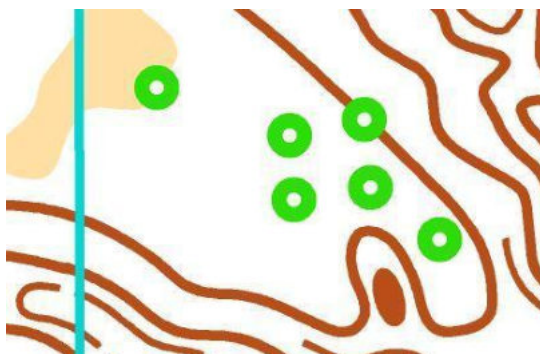
February 8, 2026

Figueira da Foz

Map: Costinha (new map 2026)

Terrain: Forest mainly of *Pinus pinaster*, inserted in typical Portuguese dune terrain, with alternation between forested areas and small open areas. Presence of several patches of dense vegetation, mainly associated with mimosas (*Acacia dealbata*) and Samoucos (*Myrica Faya*), as well as some areas of low vegetation. Progression and visibility good to very good.

There are areas in the terrain with bushes distinct from the rest of the vegetation, represented perceptibly and in their correct location, using **symbol 418**.



When these bushes present together and with dimension, they are represented as patches using symbols **408** or **410**, depending on their density and possibility of crossing.

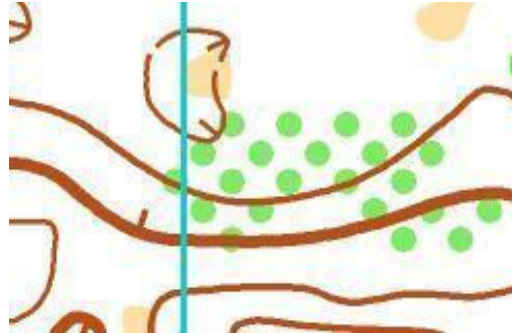


Beira Litoral O'Meeting 2026

05 a 10 Fevereiro 2026



However, there are some areas where their proliferation is large, making their individual cartographic representation impossible. Following the criterion of using symbols 402.001 and 404.001 (scattered bushes in open area), a similar symbol was created to represent areas of scattered bushes, but in a clean forest area (symbol 405).



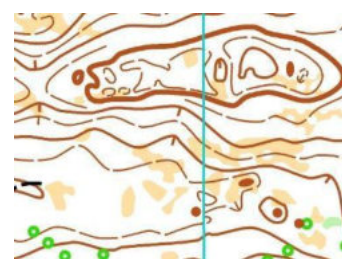
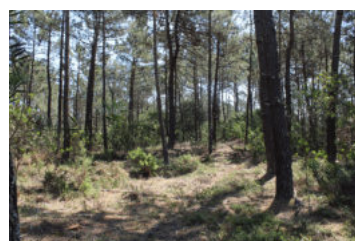
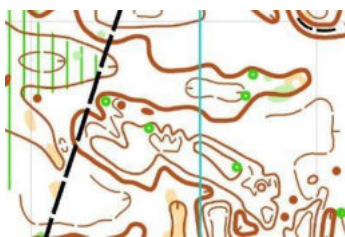
Cartographer: Alexandre Reis (Portugal)

Course setters: Rui Mora

Map scale: 1:10.000 e 1:7.500

Contour interval: 2,5m

Parking: In the locations indicated by the Organization



Beira Litoral O'Meeting 2026

05 a 10 Fevereiro 2026



Technical Information

<i>Dia 2 - Etapa 4 Floresta - Média WRE</i>					<i>Nível</i>	<i>Winning</i>	<i>Contour</i>	<i>Distance</i>
<i>Escalão</i>	<i>Escala</i>	<i>Dist. Média</i>	<i>Desnível</i>	<i>Pontos</i>	<i>Dificuldade</i>	<i>Time</i>	<i>Interval</i>	<i>To Start</i>
T10	1:7500	2700 m	70 m	16 Controls	2	20 - 25'	2,5 m	100 m
M12	1:7500	3000 m	75 m	15 Controls	3			
W12	1:7500	3000 m	75 m	15 Controls	3			
M14	1:10 000	3800 m	70 m	16 Controls	4	25 - 30'		
W14	1:10 000	3200 m	60 m	12 Controls	4			
M16	1:10 000	4900 m	110 m	16 Controls	5	30 - 35'		
W16	1:10 000	4400 m	100 m	15 Controls	5			
M18	1:10 000	6100 m	130 m	17 Controls	6			
W18	1:10 000	4700 m	110 m	16 Controls	6			
M20	1:10 000	5100 m	125 m	17 Controls	6			
W20	1:10 000	5200 m	90 m	18 Controls	6			
MB	1:10 000	4700 m	80 m	19 Controls	4			
WB	1:10 000	3800 m	105 m	15 Controls	4			
M21A	1:10 000	5700 m	125 m	19 Controls	6			
W21A	1:10 000	4700 m	110 m	16 Controls	6			
M21E	1:10 000	6800 m	160 m	21 Controls	6			
W21E	1:10 000	5800 m	135 m	16 Controls	6			
M35	1:10 000	6300 m	140 m	20 Controls	6			
W35	1:10 000	4400 m	115 m	15 Controls	6			
M40	1:10 000	5900 m	130 m	21 Controls	6			
W40	1:10 000	4400 m	115 m	15 Controls	6			
M45	1:10 000	5800 m	130 m	17 Controls	6			
W45	1:10 000	4100 m	115 m	15 Controls	6			
M50	1:10 000	5800 m	120 m	17 Controls	6			
W50	1:10 000	4100 m	115 m	15 Controls	6			
M55	1:10 000	5100 m	125 m	17 Controls	6			
W55	1:10 000	3800 m	90 m	15 Controls	6			
M60	1:10 000	4700 m	105 m	18 Controls	6			
W60	1:10 000	3800 m	90 m	15 Controls	6			
M65	1:7500	4000 m	90 m	15 Controls	5	25 - 30'		
W65	1:7500	3200 m	80 m	13 Controls	5			
M70	1:7500	3400 m	80 m	13 Controls	5			
W70	1:7500	2900 m	80 m	12 Controls	5			
M75	1:7500	3200 m	80 m	13 Controls	5			
W75	1:7500	2900 m	80 m	12 Controls	5			
M80	1:7500	2900 m	80 m	12 Controls	5			
W80	1:7500	2800 m	75 m	13 Controls	5			
M85	1:7500	2800 m	75 m	13 Controls	5			
W85	1:7500	2800 m	75 m	13 Controls	5			
M90	1:7500	2800 m	75 m	13 Controls	5			
W90	1:7500	2800 m	75 m	13 Controls	5			
Branco - Easy Short	1:7500	2700 m	70 m	16 Controls	2	25 - 30'		
Verde - Easy Long	1:10 000	3100 m	75 m	18 Controls	3	40 - 45'		
Amarelo - Difficult Short	1:10 000	3600 m	95 m	14 Controls	5	20 - 25'		
Vermelho - Difficult Long	1:10 000	5000 m	110 m	15 Controls	6	40 - 45'		

Venues

Stage 2 e 4 Forest/Quiaios



1- Secretary - Bar - Babysitting | 2 - WCs | 3 - First Aid | 4 - Finish | 5 - Informatic
6 - Start day 1 | 7 - parking | 8- Start day 2

Localizations

Check all the localizations [here](#)

Event Center

(05 e 06 Fev)

C.A.E. - Centro de artes e espetáculos

- **Address:** R. Abade Pedro 2, 3080-084 Figueira da Foz
- **Coordinates:** 40.15303, -8.860371



Hard floor and Showers

Pavilhão Gimnodesportivo do agrupamento da escola Dr. João de Barros

- **Address:** R. Dr. João Rigueira 2-143080-251 Figueira da Foz
- **Coordinates:** 40.159140, -8.860400

Secretary and Parking

Stage	Localization	Opening	Closing	Coordinates
Sprint Mass Start	Centro de artes e espetáculos – Figueira da Foz	14h00	20h00	40.152295, -8.859839 40.150994, -8.860910
Middle Distance	Arena - Costinha Quiaios	8h30	13h00	40.263930, -8.855956
Sprint WRE	Montemor-o-Velho	14h30	16h30	40.173312, -8.682785
Middle Distance WRE	Arena - Costinha Quiaios	9h00	12h00	40.263930, -8.855956
Sprint PreO	Quiaios Norte	15h00	15h30	40.249849, -8.840790

Parking and Motorhome Overnight Parking

Figueira da Foz - Parque Autocaravanas Figueira Da Foz

- Address: São Julião da, Figueira da Foz
- Coordinates: 40.147797, -8.867788

Arena do evento - Área para autocaravanas

- Address: Bom Sucesso
- Coordinates: 40.260150, -8.849510

Hard Floor and Showers

There will be the possibility of showers and overnight stay in sleeping bag and mattress regime.

Hard Floor will take place at the pavilion of the Escola EB 2.º e 3.º Ciclos Dr. João de Barros.

Beira Litoral O'Meeting 2026

05 a 10 Fevereiro 2026



Space rules

- Mandatory use of appropriate footwear
- Permitted to set up tents or similar inside the pavilion
- Prohibited to cook food or wash dishes inside the pavilion

Non-compliance with these rules results in expulsion from the space.

Access to Hard Floor is exclusive to athletes with an identification wristband assigned by the organization after registration on OriOásis. The wristband ensures the safety of the facilities and belongings.

The organization sets specific opening and closing hours for the space. Nevertheless, it is not responsible for any theft, with each athlete responsible for taking care of their belongings.

Dining Area

The school provides kitchen and cafeteria. You should bring only your own pots. Preferably, you can use the school's plates, glasses, and cutlery. A staff member will be present for support.

Schedule:

February 6: Opening 20:30

February 7: Closing 09:30, Opening 15:00

February 8: Closing 09:30, Opening 13:00, Closing 16:00

February 6

Opening 20:30

February 7

Closing 09:30

Opening 15:00

February 8

Closing 09:30

Opening 13:00

Closing 16h00

Babysitting

There will be babysitting service at the arena in all stages.

Only children registered on OriOásis will have access to this space



Each child will receive a wristband to be filled by the child's guardian

The wristbands will have the guardian's start time, and they can leave the child in the babysitting area 30 minutes before start, and must pick up the child no later than 30 minutes after their arrival time.

SI-Card Number Changes and Modifications

Any changes to the SI-Card number must be made at the Secretary before start.

Athlete starts with changes not previously validated at the Secretary will not be permitted.

Important: Any SI-Card change or modification after February 2 will have a cost of €3.00.

Classifications

The final result of the competition is governed by the FPO Competition Regulations

In case of any omissions in the FPO regulations, the IOF regulations will be applied

Prizes

- WRE: Prizes for the top 5 athletes in W21E and M21E categories
- Sprint Mass Start: Prizes for the top three in each category
- Night Sprint: Prizes for the top three in each category
- BLOM 2026: Prize for the top 3 athletes in each competition category (5 top athletes in M21E, W21E categories) and for the 3 best clubs
- PreO: Prizes for the top three athletes in each class
- T10 and H/D12 will only receive souvenirs for all participants as long as registered
- Open categories: prizes for the top 3 in each category

Start times

If you have any constraints related to start times, please indicate this information during the registration process on the OriOasis platform, in the observations section.

There will be no changes to start times after the start lists are published.



The H/D 10, H/D 12 and open categories will have assigned start times, but as a reference only to prevent a large gathering of athletes in the same minute. They should start their race using the 'Start' Base which will be in the Start Area as usual.

Time Limits per Stage

- Sprint race: Time limit of 50 minutes
- Middle Distance races: Time limit of 2 hours
- PreO race: The time limit will be indicated in the specific technical information for PreO

Sports Insurance

In accordance with current legislation, all participants must have sports insurance. Therefore, all will be covered by the Portuguese Orienteering Federation's (FPO) insurance policy, as follows:

Athletes affiliated with FPO: Coverage by FPO sports insurance

Other participants:

- Open and Training categories: free insurance
- Competition categories – adds €2 per stage to the fee

Participants must provide their passport number (preferably) or national identification number during the registration process on the OriOasis platform. Portuguese citizens must also provide their VAT number (NIF).

FPO insurance and policy conditions are outside the scope of responsibility of BLOM2026 organizers. For detailed information about insurance conditions, contact FPO or consult the respective documentation.

Athletes affiliated with FEDO have coverage by FEDO sports insurance.

Bar

The organization of Beira Litoral O'Meeting 2026 reinforces its commitment to environmental sustainability, aligning with the national motto 'Vamos Lixar o Lixo' (Let's Trash Trash). The event will actively promote responsible practices, namely waste reduction, waste separation and recycling, the use of reusable materials, and the installation of eco-points in all competition areas. In this sense, all athletes are encouraged to use their own reusable dishes, contributing to the reduction of disposable material consumption. The organization will, however, have disposable dishes available, and their use is subject to an eco-point fee of €1, as a way to encourage the adoption of more sustainable behaviors. The objective is to minimize the environmental impact of the event and, at the same time, raise awareness within the orienteering community about the importance of preserving the natural spaces where the sport takes place.

Beira Litoral O'Meeting 2026

05 a 10 Fevereiro 2026





Technical Jury Constitution

Beira Litoral O'Meeting

- Advisor: Carlos Monteiro (FPO 1931)
- Technical Jury: Jorge Baltazar (FPO 1093)
- Rafael Lima (FPO 1302)
- Nuno Pedro (FPO 2562)

PreO Sprint Stage

- Advisor: Nuno Rebelo
- Cláudio Tereso (FPO 2243)
- Edgar Domingues (FPO 2635)
- Jorge Baltazar (FPO 1093)

Director: Susana Reis Mora (FPO 5042)

Technical Director: Rui Mora (FPO 2236)

BLOM26
BEIRA LITORAL O" MEETING 2026
Figueira da Foz - Portugal